

# Hazeltree Data Insights™

Extended Market Color to Optimize Counterparty Management  
and Deliver Alpha to Fund Performance

HAZELTREE

## Are you actively managing and optimizing your cash to unlock value?

Hazeltree provides innovative cloud-based treasury solutions to investment management firms, delivering enhanced transparency, liquidity, improved performance and risk mitigation.

Hazeltree is a flexible and modular solution that offers best-of-breed treasury management capabilities, including cash, liquidity, collateral, securities finance, and analytics solutions. Our advanced technology provides the most efficient methods to increase scale, manage liquidity, and realize revenue opportunities.



**\$2+ Trillion**

Total assets under advisory



**12,000+**

Individual Global Securities



**1,000+**

Funds



**30+**

Broker comparisons

Hazeltree's community of hedge funds, separately managed accounts and asset managers, collectively operating with ~\$2 trillion in client assets, require the highest levels of performance when it comes to data management and insights.

Our robust technology framework and processing powering collect, normalize, anonymize, and deliver data through secure methods, resulting in an added degree of control and flexibility for both long and short activity.

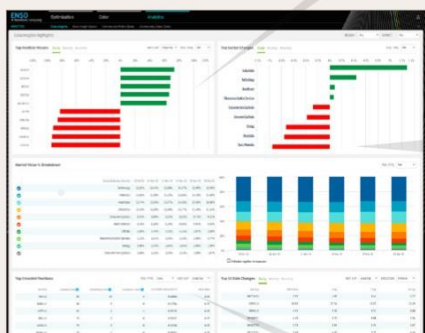
Hedge funds, asset managers and banks benefit from a broader access to a diverse pool of aggregated global multi-asset class security data.

- **Best Execution Data:** historical and current trend analysis for: individual security analysis, position movers, sector changes, sector breakdown, crowdedness indicators, and most active securities lending rate changes.
- **Unparalleled Market Color:** We enable managers to explore one of the largest alternative data sets on the market with detailed analytics and charting. Users can access and search the breadth of our data across a deep pool of global securities to explore best execution rates and liquidity metrics, overlaid with external price and utilization data points.

## Leverage Hazeltree Data To Seize Opportunities

## Hazeltree Data Insights includes the following key features:

- Enso Market Rate: our best execution metrics enable you to optimize counterparty management and focus on seizing daily alpha-generating opportunities.
- Global securities lending analytics include:
  - Long and short position changes
  - Sector and industry changes
  - Securities lending rate changes
  - Crowdedness indicators
  - Global securities lending market data
  - Historical time weighted series
  - Confidence scoring metrics
  - External price and utilization data



**Top Position Movers**



**Top Sector Changes**

**Top Crowded Positions** table showing securities with metrics like Crowded Score, Borrowing Score, and Conversion Score. The table lists securities and their corresponding metrics.

Security	Crowded Score	Borrowing Score	Conversion Score	3M Market Utilization %	30D Beta
AGN US	99	39	5	8.18848	0.25
BABA US	98	5	0	8.17384	0.25
HSBT US	83	1	1	8.25133	0.25
BMY US	79	2	0	8.78217	0.25
APZN US	76	3	0	8.12228	0.25
GOOGL US	76	1	0	8.38522	0.25
UTX US	65	3	0	8.1276	0.25
CRH US	62	3	0	8.48247	0.25
JAC US	62	29	2	2.7271	0.25
AMTH US	62	4	2	8.82251	0.25

**Top Crowded Positions**

**HAZELTREE**



Contact your Hazeltree sales representative for more information:

[info@hazeltree.com](mailto:info@hazeltree.com)

NEW YORK | LONDON | HONG KONG

Hazeltree provides innovative cloud-based treasury solutions to investment management firms, delivering enhanced transparency, liquidity, improved performance and risk mitigation.

Hazeltree's treasury and portfolio finance technology solutions serve hedgefunds, asset managers, private equity funds, private debt, real estate funds, infrastructure funds, pensions and endowments, and their service providers. Hazeltree is headquartered in New York, with offices in London and Hong Kong. For more information, please visit [www.hazeltree.com](http://www.hazeltree.com)

All Intellectual Property Rights in the Hazeltree aggregated data and all derivatives thereof shall be and remain vested in Hazeltree from the moment of creation, which Hazeltree may share with third parties, including those that do not make any data contributions to the aggregated data.